

Overview:

Most of the software provided for use with the Motion Mind controller was compiled using VB6.0 on an older Windows 98 operating system. During installation you will probably be prompted to retain or replace some drivers in your system. Always retain the existing drivers on your computer. All test software provided by Solutions Cubed, LLC is provided “as is”. The test software is installed on both Windows 98 and Windows XP systems during hardware testing.

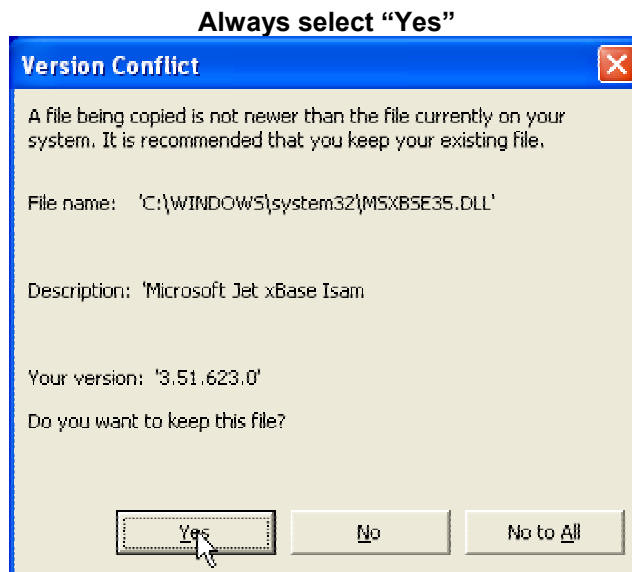
Getting Started:

Download the zipped file from the Solutions Cubed, LLC web site. Open it with a zip utility such as WinZip. Then double-left-click on the file “setup.exe”. The installation process will begin.

Name	Modified	
setup.exe	2/23/2004 12:00 ...	
Setup.lst	3/14/2005 1:33 PM	
MOTM_Test_1.CAB	3/14/2005 1:32 PM	1
MOTM_Test_1.exe	3/14/2005 1:28 PM	

Version Conflicts:

Newer computer systems will have newer drivers installed. When the installation program begins to install a driver that is older than the one on your computer you will be prompted to decide if you want to keep the newer driver. **Always keep the driver already on your computer.** This will ensure that the installation of the test software does not prevent other previously installed software from functioning.



Failed Installation:

If installation fails, or the program fails to run correctly after installation, remove the program from your computer and use the ASCII mode interface.